

Overview

LEG

| | |
|-------------------|--------|
| Leg Length | 120 ft |
| Leg Diameter (Od) | 36 in |
| Leg Tower Height | 9 ft |

HULL

| | |
|---------------------|---------|
| Length (Overall) | 76.5 ft |
| Length (Barge Only) | 64 ft |
| Beam (Overall) | 57 ft |
| Beam (Barge Only) | 32 ft |
| Hull Depth | 7 ft |

PAD

| | |
|--------------|-------------|
| Length | 24 ft |
| Width | 12 ft |
| Depth | 2 ft |
| Bearing Load | N/A |
| Design | 2-Way Slope |

CRANE

| | Port | Starboard |
|------------------|------------|------------|
| Load Rating | 25 ton | 10 ton |
| Make | Nautilus | EBI |
| Model | 4000 | C20-60 |
| Boom Type | Telescopic | Fixed |
| Boom Length | 80 ft | 60 ft |
| Crane Inst. Type | Deck Mount | Deck Mount |

PROPULSION

| | |
|-------------------------|---------------|
| Mains - Make | GM |
| Mains - Model | 12V71 |
| Horsepower | 800 hp |
| Bow Thruster Equipped | No |
| Clutch Make/Reduction | Twin Disc 3:1 |
| Consumption/Engine-Full | 19.4 gph |
| Consumption/Engine-Half | 9.7 gph |

GENERATORS

| | |
|------------------------|---------|
| Generator Engine Make | GM |
| Generator Engine Model | 4-71 |
| Generator Output | 50 kw |
| Consumption/Gen | 5.0 gph |

DECK

| | |
|-----------------------|-----------------------|
| Total Deck Area | 1,963 ft ² |
| Clear Deck Area | 957 ft ² |
| Additional Clear Area | N/A |
| Maximum Deck Load | 110,000 |

CAPACITIES

| | |
|---------------------|-----------|
| Diesel Fuel | 2,396 usg |
| Lube | 147 usg |
| Hydraulic Oil | 1,026 usg |
| Potable Water | 4,587 usg |
| Watermaker Equipped | No |

ELECTRONIC AIDS & COMMUNICATION

| | |
|-----------------------|----------------|
| Compass | Fully Equipped |
| Gps/Dgps | Fully Equipped |
| Radar(s) | Fully Equipped |
| Fathometer | Fully Equipped |
| Loudhailer | Fully Equipped |
| Satellite Phone | Fully Equipped |
| VHF Radio | Fully Equipped |
| Single Sideband Radio | Fully Equipped |
| EPIRB | Fully Equipped |
| GMDSS | No |

PERSONNEL ACCOMMODATIONS

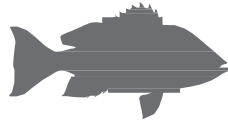
| | |
|------------------------|-------------------|
| Total Accommodations | 17 |
| VIP Accommodations | 1 |
| Galley & Dining | Fully Equipped |
| TV Lounge | Fully Equipped |
| Laundry Facility | Fully Equipped |
| Air Condition / Heater | Std Central Units |

PERFORMANCE

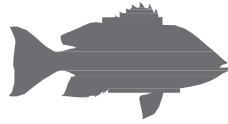
| | |
|-------------------------|---------|
| Estimated Speed | 6 knots |
| Max Sep – Pad to Deck | 104 ft |
| Max Working Water Depth | 80 ft |
| Min Working Water Depth | 6.5 ft |

DOCUMENTATION

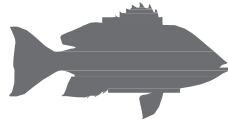
| | |
|------------------------|-----------------------|
| Class | None |
| Flag/ Port of Registry | USA / New Orleans, LA |
| USCG | Inspected |
| SOLAS | No |
| Official Number | 576299 |
| IMO | 8766131 |
| Call Sign | WDH5368 |
| Year Built | 1976 |
| Builder | Sun Contractors |
| Registered Tonnage | 97 |
| International Tonnage | None |



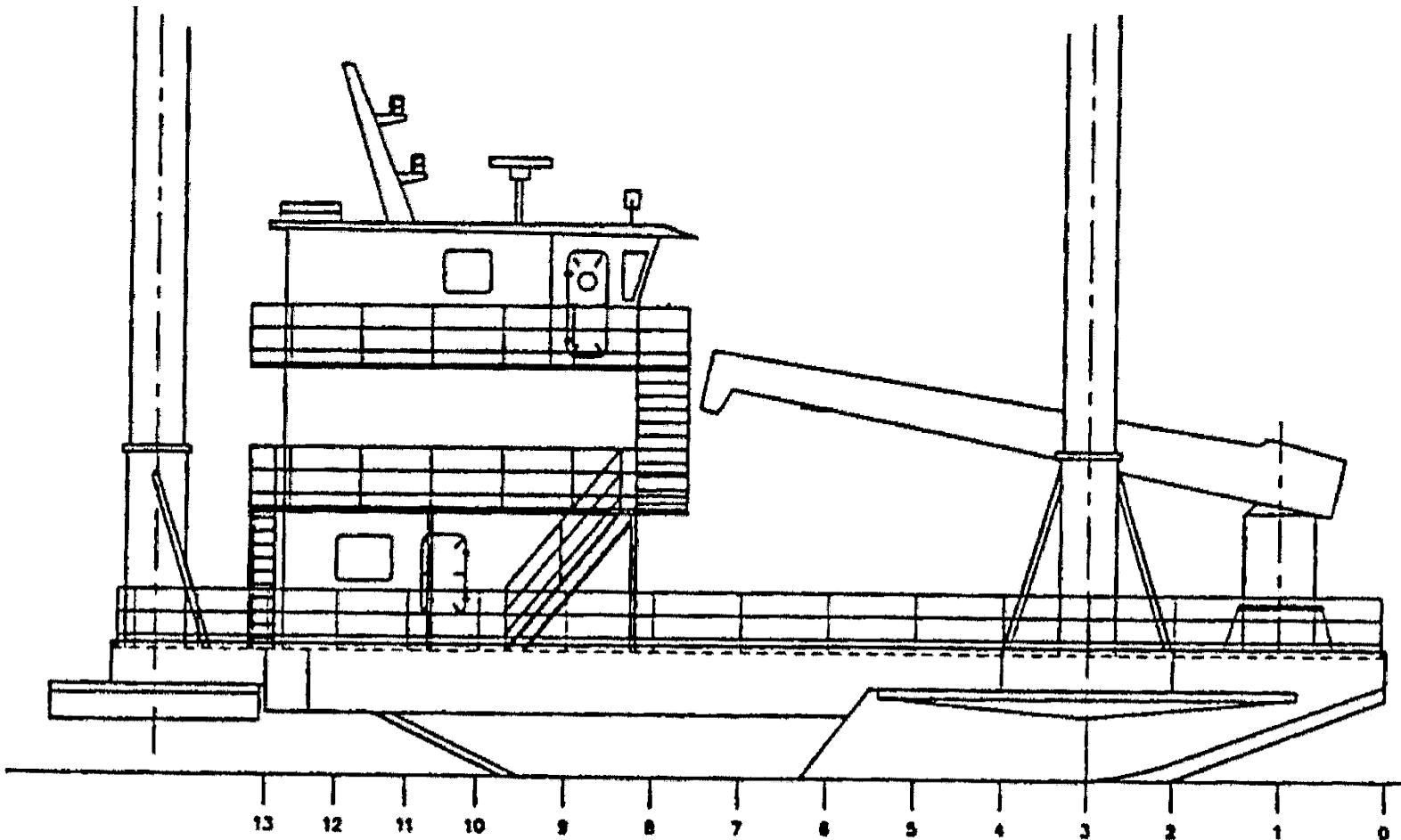
| NAUTILUS 25 TON CRANE | | |
|---|---------------------|----------------------|
| 4000 | | |
| 80 FT TELESCOPIC BOOM | | |
| MAXIMUM SAFE WORKING LOAD | | |
| 60 FT BOOM RETRACTED | | |
| BOOM RADIUS (ft) | ONBOARD LOAD (lbs.) | OFFBOARD LOAD (lbs.) |
| 10 | 38,140 | 25,439 |
| 15 | 38,140 | 25,439 |
| 20 | 32,000 | 21,300 |
| 25 | 24,000 | 16,000 |
| 30 | 21,330 | 14,227 |
| 35 | 18,000 | 12,000 |
| 40 | 16,500 | 11,000 |
| 45 | 14,500 | 9,600 |
| 50 | 12,000 | 8,000 |
| 60 | 5,960 | 3,975 |
| FAST LINE RATED FOR 2,600 LBS AT ALL RADII | | |
| 80 FT BOOM EXTENDED | | |
| BOOM RADIUS (ft) | ONBOARD LOAD (lbs.) | OFFBOARD LOAD (lbs.) |
| 20 | 32,150 | 21,450 |
| 25 | 25,600 | 17,000 |
| 30 | 21,300 | 14,200 |
| 35 | 18,200 | 12,100 |
| 40 | 15,540 | 10,350 |
| 45 | 14,000 | 9,350 |
| 50 | 12,000 | 8,000 |
| 55 | 10,830 | 7,225 |
| 60 | 9,100 | 6,070 |
| 65 | 8,000 | 5,335 |
| 70 | 6,000 | 4,000 |
| 75 | 4,500 | 3,000 |
| 80 | 3,800 | 2,600 |
| FAST LINE RATED FOR 2,600 LBS AT ALL RADII | | |

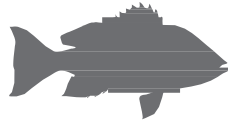


| EBI 10 TON CRANE* | | |
|--|----------------------------|-----------------------------|
| C20B-50 | | |
| 60 FT FIXED BOOM | | |
| MAXIMUM SAFE WORKING LOAD | | |
| BOOM RADIUS (ft) | ONBOARD LOAD (lbs.) | OFFBOARD LOAD (lbs.) |
| 10 | 9,650 | 9,650 |
| 15 | 9,650 | 9,650 |
| 20 | 9,275 | 9,650 |
| 25 | 7,800 | 9,650 |
| 30 | 6,650 | 9,650 |
| 35 | 5,325 | 8,162 |
| 40 | 4,175 | 6,437 |
| 45 | 3,300 | 5,125 |
| 50 | 2,550 | 4,000 |
| 55 | 2,000 | 3,175 |
| 60 | 1,475 | 2,387 |
| FAST LINE RATED FOR 4,900 LBS UP TO 35 FT | | |
| *CURRENT CONFIGURATION IS FOR 5 TONS | | |



Outboard Profile

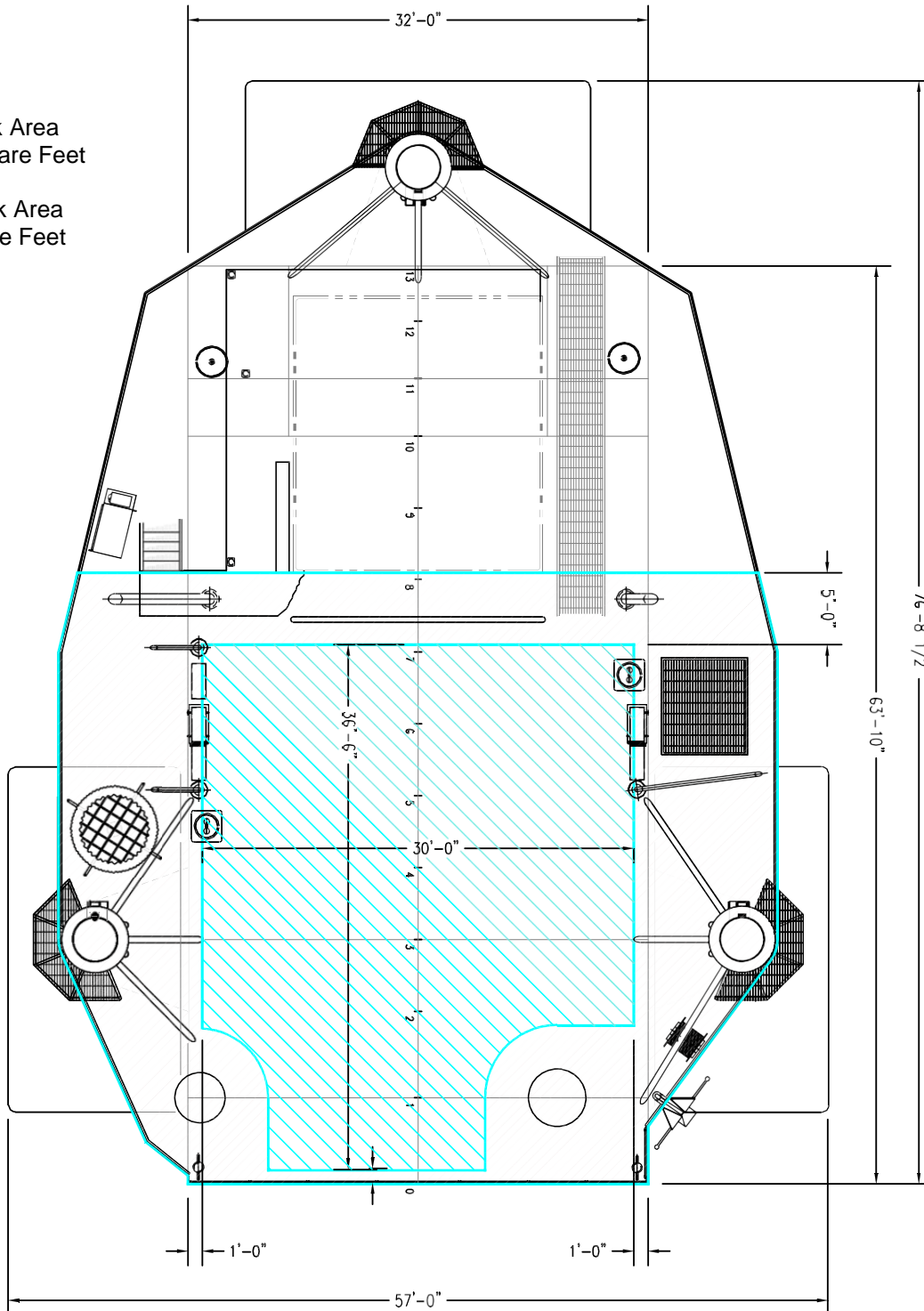




Open Deck Area

Total Deck Area
1,963 Square Feet

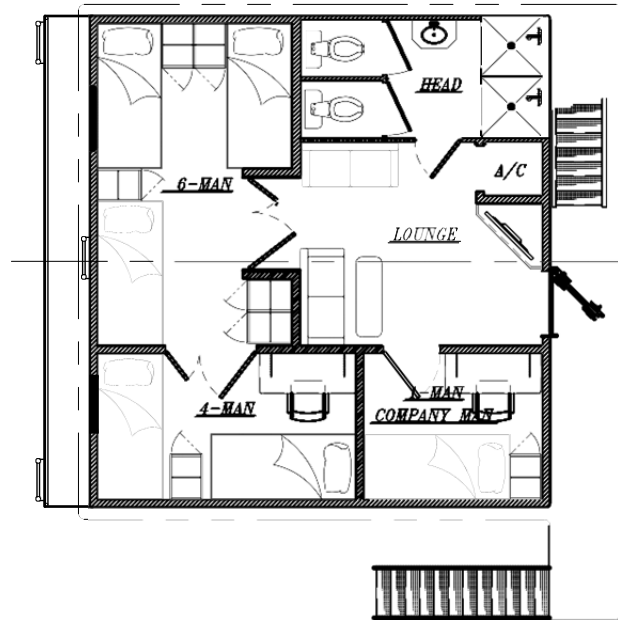
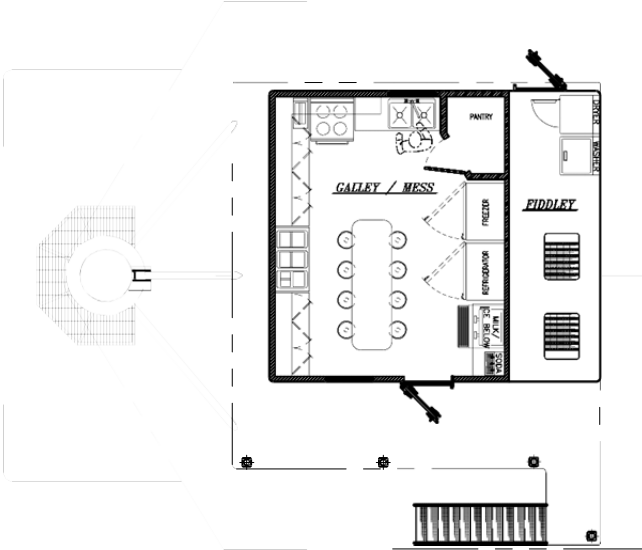
Clear Deck Area
957 Square Feet





Main Deck Quarters

01 Level Quarters



02 Level Quarters

