



BARRACUDA | Class 120' Liftboat

HOME PORT: NEW ORLEANS, LA

allcoastllc.com/specsheets

Overview

LEG

Leg Length	120 ft
Leg Diameter (Od)	36 in
Leg Tower Height	12 ft

HULL

Length (Overall)	86.5 ft
Length (Barge Only)	74 ft
Beam (Overall)	57 ft
Beam (Barge Only)	50 ft
Hull Depth	7 ft

PAD

Length	24 ft
Width	12 ft
Depth	1.5 ft
Bearing Load	3,000 lbs/ft ²
Design	2-Way Slope

CRANE

Port Starboard

Load Rating	15 ton	30 ton
Make	OECO	EBI
Model	99C02	C60A-70
Boom Type	Telescopic	Fixed
Boom Length	70 ft	70 ft
Crane Inst. Type	Deck Mount	Deck Mount

PROPULSION

Mains - Make	GM
Mains - Model	12V71
Horsepower	800 hp
Bow Thruster Equipped	No
Clutch Make/Reduction	Twin Disc 2:1
Consumption/Engine-Full	19.4 gph
Consumption/Engine-Half	9.7 gph

GENERATORS

Generator Engine Make	GM
Generator Engine Model	3-71
Generator Output	80 kw
Consumption/Gen	5.0 gph

DECK

Total Deck Area	2,256 ft ²
Clear Deck Area	1,165 ft ²
Additional Clear Area	N/A
Maximum Deck Load	135,000

CAPACITIES

Diesel Fuel	4,200 usg
Lube	139 usg
Hydraulic Oil	976 usg
Potable Water	5,200 usg
Watermaker Equipped	No

ELECTRONIC AIDS & COMMUNICATION

Compass	Fully Equipped
Gps/Dgps	Fully Equipped
Radar(s)	Fully Equipped
Fathometer	Fully Equipped
Loudhailer	Fully Equipped
Satellite Phone	Fully Equipped
VHF Radio	Fully Equipped
Single Sideband Radio	Fully Equipped
EPIRB	Fully Equipped
GMDSS	No

PERSONNEL ACCOMMODATIONS

Total Accommodations	22
VIP Accommodations	2
Galley & Dining	Fully Equipped
TV Lounge	Fully Equipped
Laundry Facility	Fully Equipped
Air Condition / Heater	Std Central Units

PERFORMANCE

Estimated Speed	5 knots
Max Sep – Pad to Deck	106 ft
Max Working Water Depth	80 ft
Min Working Water Depth	6 ft

DOCUMENTATION

Class	None
Flag/ Port of Registry	USA / New Orleans, LA
USCG	Inspected
SOLAS	No
Official Number	603826
IMO	7942776
Call Sign	WDH5387
Year Built	1982
Builder	Sun Contractors
Zero Discharge Capable	Yes
Registered Tonnage	92
International Tonnage	None



OECO 15 TON CRANE*		
99C02		
70 FT TELESCOPIC BOOM		
MAXIMUM SAFE WORKING LOAD		
50 FT BOOM RETRACTED		
BOOM RADIUS (ft)	ONBOARD LOAD (lbs.)	OFFBOARD LOAD (lbs.)
7	16,000	10,667
13	16,000	10,667
17	15,800	10,533
25	10,440	6,960
32	7,346	4,897
38	5,604	3,736
43	4,555	3,037
48	3,925	2,617
49	3,586	2,391
50	3,478	2,319
70 FT BOOM EXTENDED		
BOOM RADIUS (ft)	ONBOARD LOAD (lbs.)	OFFBOARD LOAD (lbs.)
10	16,000	10,667
18	12,000	8,000
24	9,800	6,533
35	6,828	4,552
45	4,619	3,079
54	3,374	2,249
61	2,625	1,750
66	2,484	1,656
69	2,342	1,561
70	2,200	1,467
*CURRENT CONFIGURATION IS FOR 8 TONS		

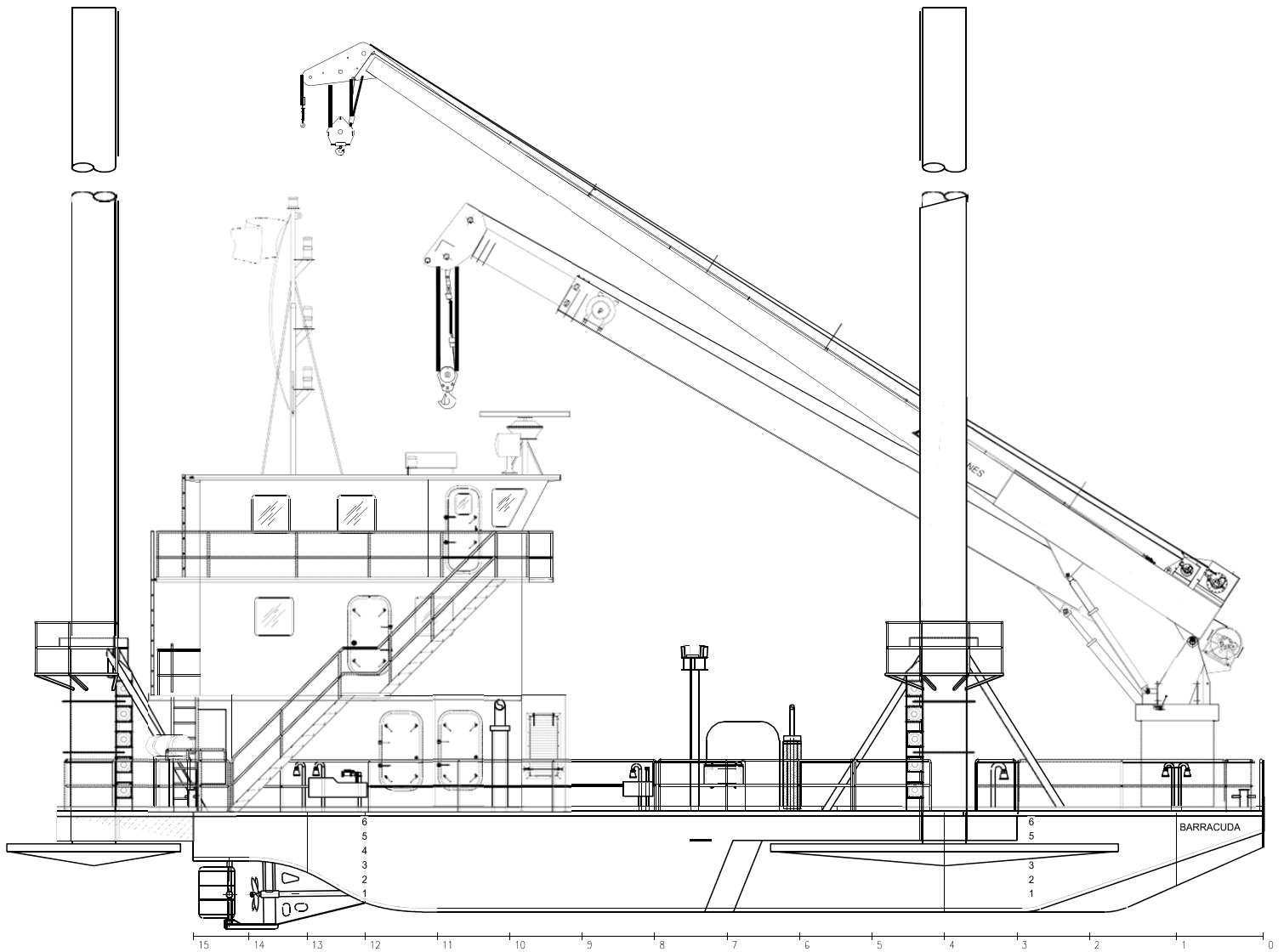


EBI 30 TON CRANE		
C60A-70		
70 FT FIXED BOOM		
MAXIMUM SAFE WORKING LOAD		
BOOM RADIUS (ft)	ONBOARD LOAD (lbs.)	OFFBOARD LOAD (lbs.)
10	60,000	40,000
15	40,000	26,600
20	30,000	20,000
25	23,000	15,300
30	20,000	13,300
35	18,000	12,000
40	15,000	10,000
45	13,300	8,866
50	11,400	7,600
55	10,000	6,667
60	9,000	6,000
65	8,000	5,330
70	7,000	4,667

FAST LINES RATED FOR 4,667 LBS. AT ALL RADII



Outboard Profile

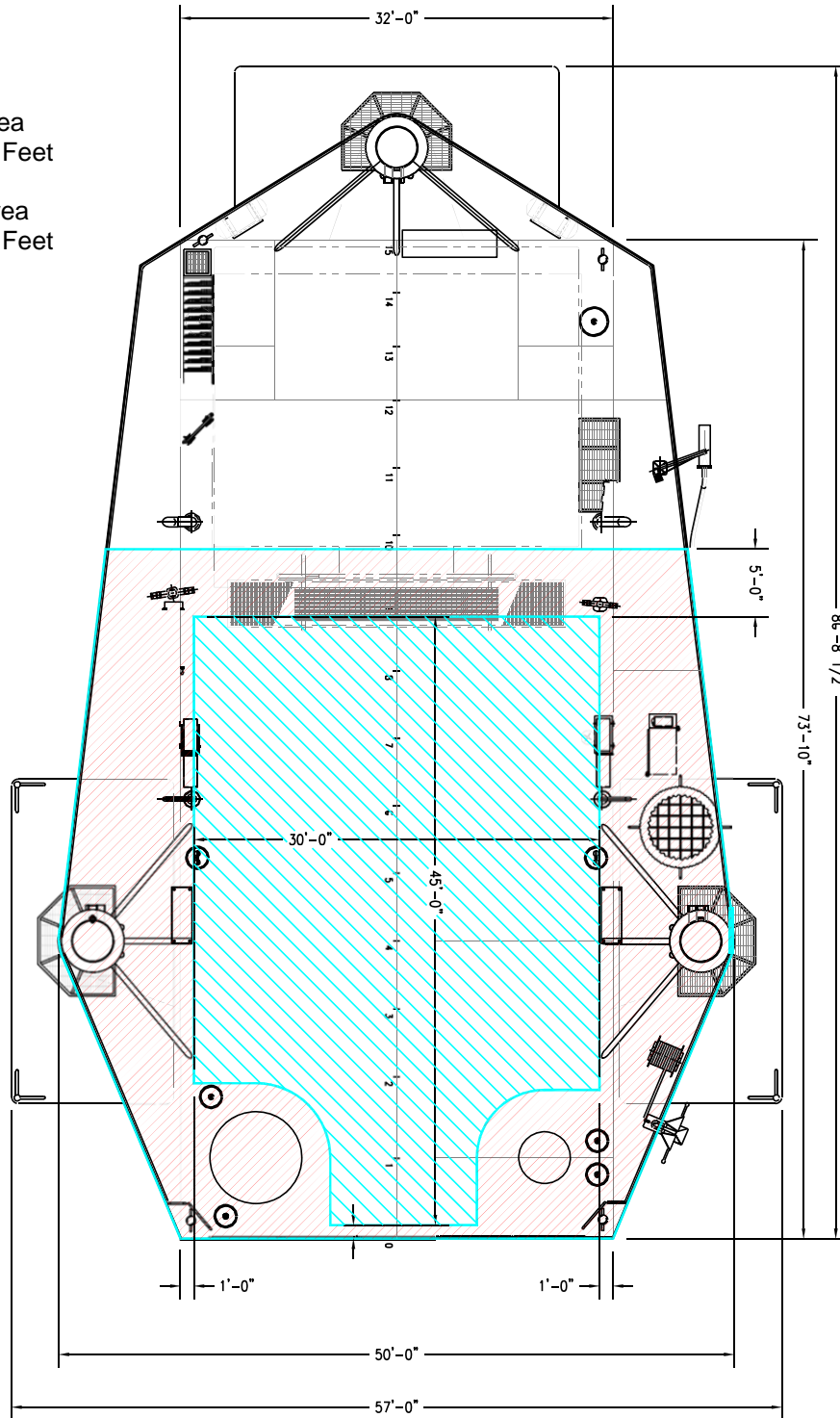




Open Deck Area

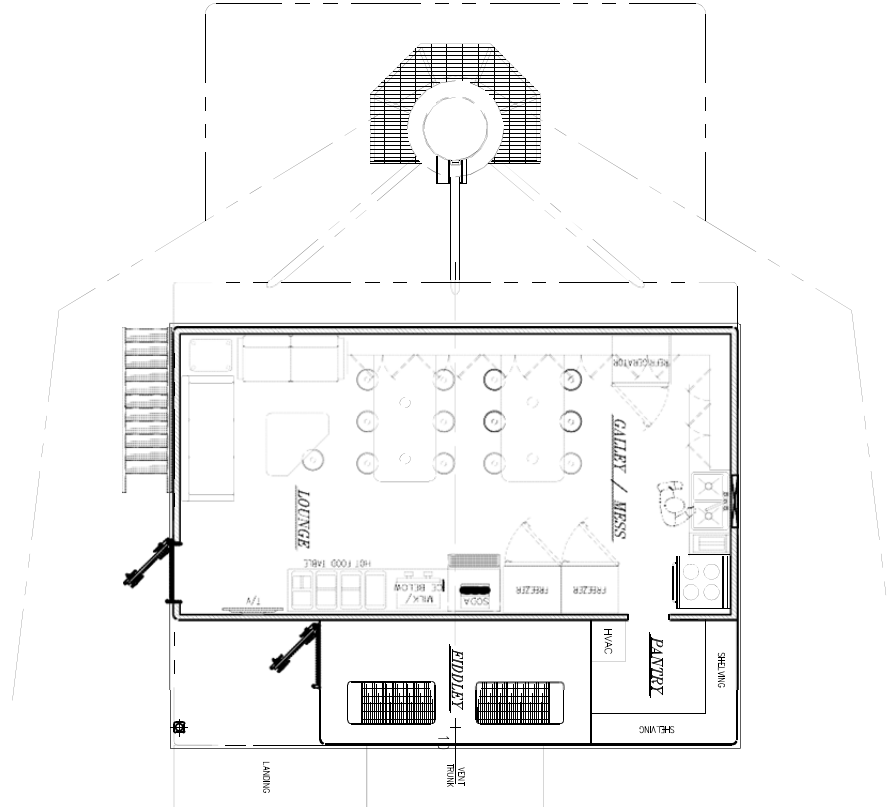
Total Deck Area
2,256 Square Feet

Clear Deck Area
1,165 Square Feet

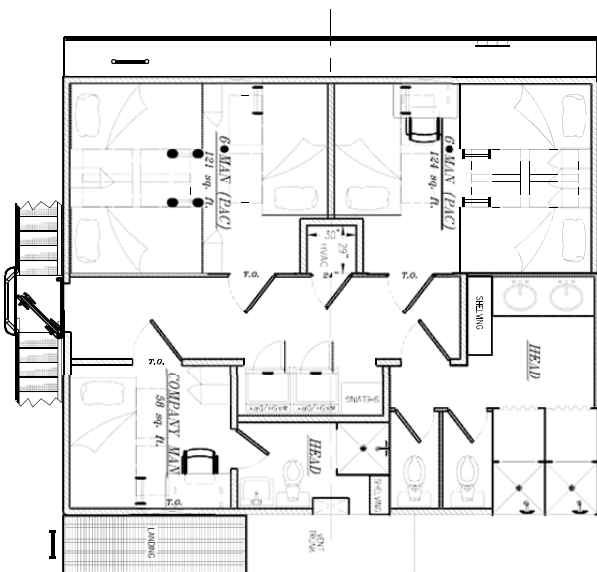




Main Deck Level Living Quarters



01 Deck Level Living Quarters



02 Deck Level Living Quarters

