



Overview

LEG

Leg Length	105 ft
Leg Diameter (Od)	36 in
Leg Tower Height	13.5 ft

HULL

Length (Overall)	86.5 ft
Length (Barge Only)	74 ft
Beam (Overall)	57 ft
Beam (Barge Only)	32 ft
Hull Depth	7 ft

PAD

Length	24 ft
Width	12 ft
Depth	1.5 ft
Bearing Load	3,000 lbs/ft ²
Design	2-Way Slope

CRANE

	Port	Starboard
Load Rating	15 ton	25 ton
Make	OECO	Alaskan
Model	99C02	MCT 2570
Boom Type	Telescopic	Telescopic
Boom Length	70 ft	70 ft
Crane Inst. Type	Deck Mount	Deck Mount

PROPULSION

Mains - Make	GM
Mains - Model	12V71
Horsepower	800 hp
Bow Thruster Equipped	No
Clutch Make/Reduction	Twin Disc 3:1
Consumption/Engine-Full	19.4 gph
Consumption/Engine-Half	9.7 gph

GENERATORS

Generator Engine Make	GM
Generator Engine Model	4-71
Generator Output	50 kw
Consumption/Gen	6.4 gph

DECK

Total Deck Area	1,935 ft ²
Clear Deck Area	1,200 ft ²
Additional Clear Area	N/A
Maximum Deck Load	110,000

CAPACITIES

Diesel Fuel	2,230 usg
Lube	180 usg
Hydraulic Oil	718 usg
Potable Water	2,874 usg
Watermaker Equipped	No

ELECTRONIC AIDS & COMMUNICATION

Compass	Fully Equipped
Gps/Dgps	Fully Equipped
Radar(s)	Fully Equipped
Fathometer	Fully Equipped
Loudhailer	Fully Equipped
Satellite Phone	Fully Equipped
VHF Radio	Fully Equipped
Single Sideband Radio	Fully Equipped
EPIRB	Fully Equipped
GMDSS	No

PERSONNEL ACCOMMODATIONS

Total Accommodations	21
VIP Accommodations	2
Galley & Dining	Fully Equipped
TV Lounge	Fully Equipped
Laundry Facility	Fully Equipped
Air Condition / Heater	Std Central Units

PERFORMANCE

Estimated Speed	6 knots
Max Sep – Pad to Deck	93 ft
Max Working Water Depth	70 ft
Min Working Water Depth	6 ft

DOCUMENTATION

Class	None
Flag/ Port of Registry	USA / New Orleans, LA
USCG	Inspected
SOLAS	No
Official Number	614063
IMO	7948421
Call Sign	WDH4834
Year Built	1979
Builder	Sun Contractors
Registered Tonnage	97
International Tonnage	None



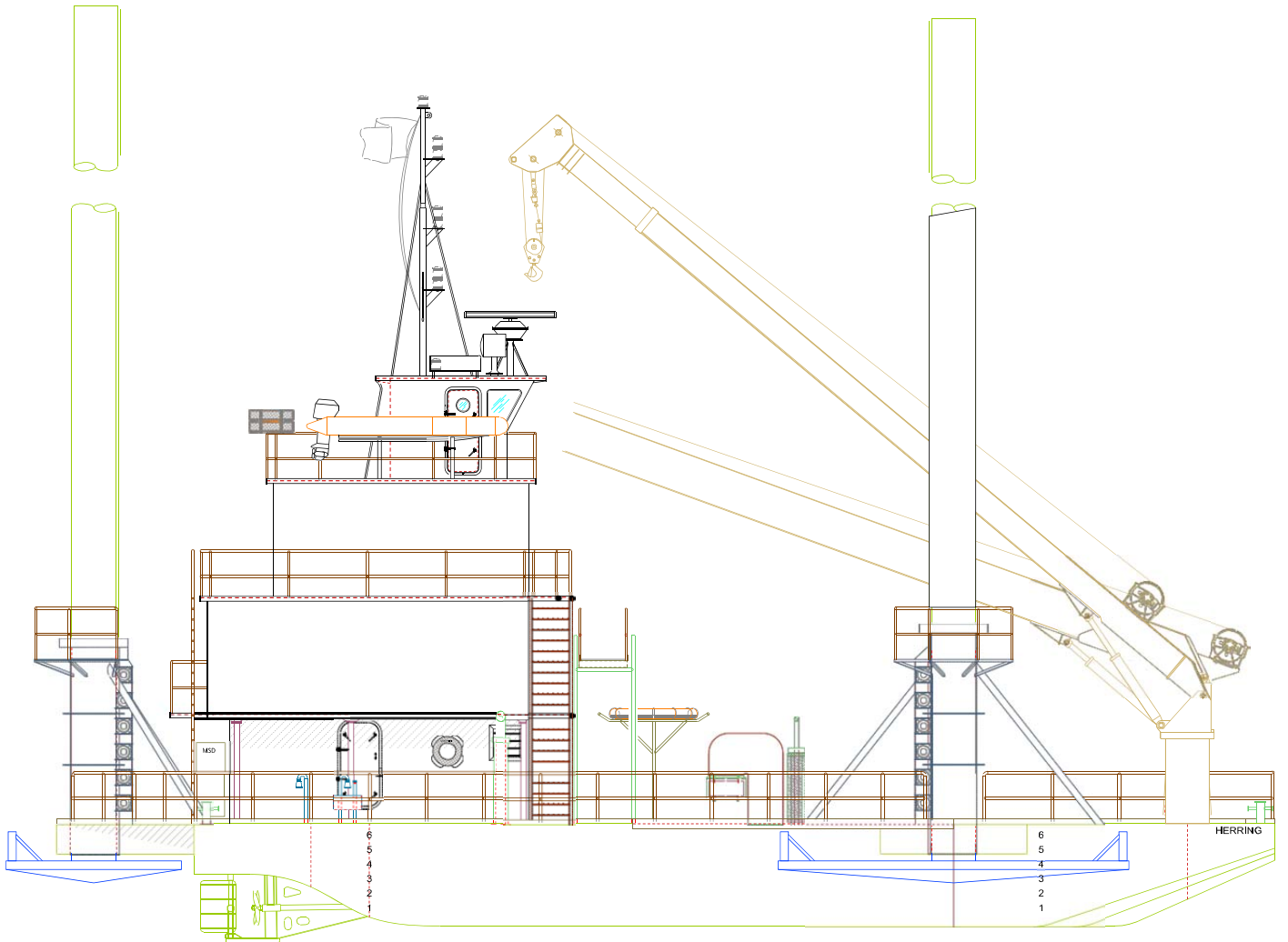
OECO 15 TON CRANE*		
99C02		
70 FT TELESCOPIC BOOM		
MAXIMUM SAFE WORKING LOAD		
50 FT BOOM RETRACTED		
BOOM RADIUS (ft)	ONBOARD LOAD (lbs.)	OFFBOARD LOAD (lbs.)
7	16,000	10,667
13	16,000	10,667
17	15,800	10,533
25	10,440	6,960
32	7,346	4,897
38	5,604	3,736
43	4,555	3,037
47	3,925	2,617
49	3,586	2,391
50	3,478	2,319
70 FT BOOM EXTENDED		
BOOM RADIUS (ft)	ONBOARD LOAD (lbs.)	OFFBOARD LOAD (lbs.)
10	16,000	10,667
18	12,000	8,000
24	9,800	6,533
35	6,828	4,552
45	4,619	3,079
54	3,374	2,249
61	2,625	1,750
66	2,484	1,656
69	2,342	1,561
70	2,200	1,467
*CURRENT CONFIGURATION IS FOR 8 TONS		



ALASKAN 25 TON CRANE		
MCT 2570		
70 FT TELESCOPIC BOOM		
MAXIMUM SAFE WORKING LOAD		
50 FT BOOM RETRACTED		
BOOM RADIUS (ft)	ONBOARD LOAD (lbs.)	OFFBOARD LOAD (lbs.)
10.10	51,019	34,013
13.40	35,349	23,566
25.20	18,928	12,619
36.10	12,943	8,629
44.00	9,487	6,325
48.60	7,950	5,300
50.00	4,772	3,181
FAST LINE RATED FOR 3,181 LBS AT ALL RADII		
70 FT BOOM EXTENDED		
BOOM RADIUS (ft)	ONBOARD LOAD (lbs.)	OFFBOARD LOAD (lbs.)
14.83	28,672	19,115
18.71	23,805	15,870
34.76	12,080	8,053
49.81	7,802	5,201
60.72	5,345	3,563
67.87	3,538	2,359
70.00	1,968	1,312
FAST LINE RATED FOR 1,312 LBS AT ALL RADII		



Outboard Profile

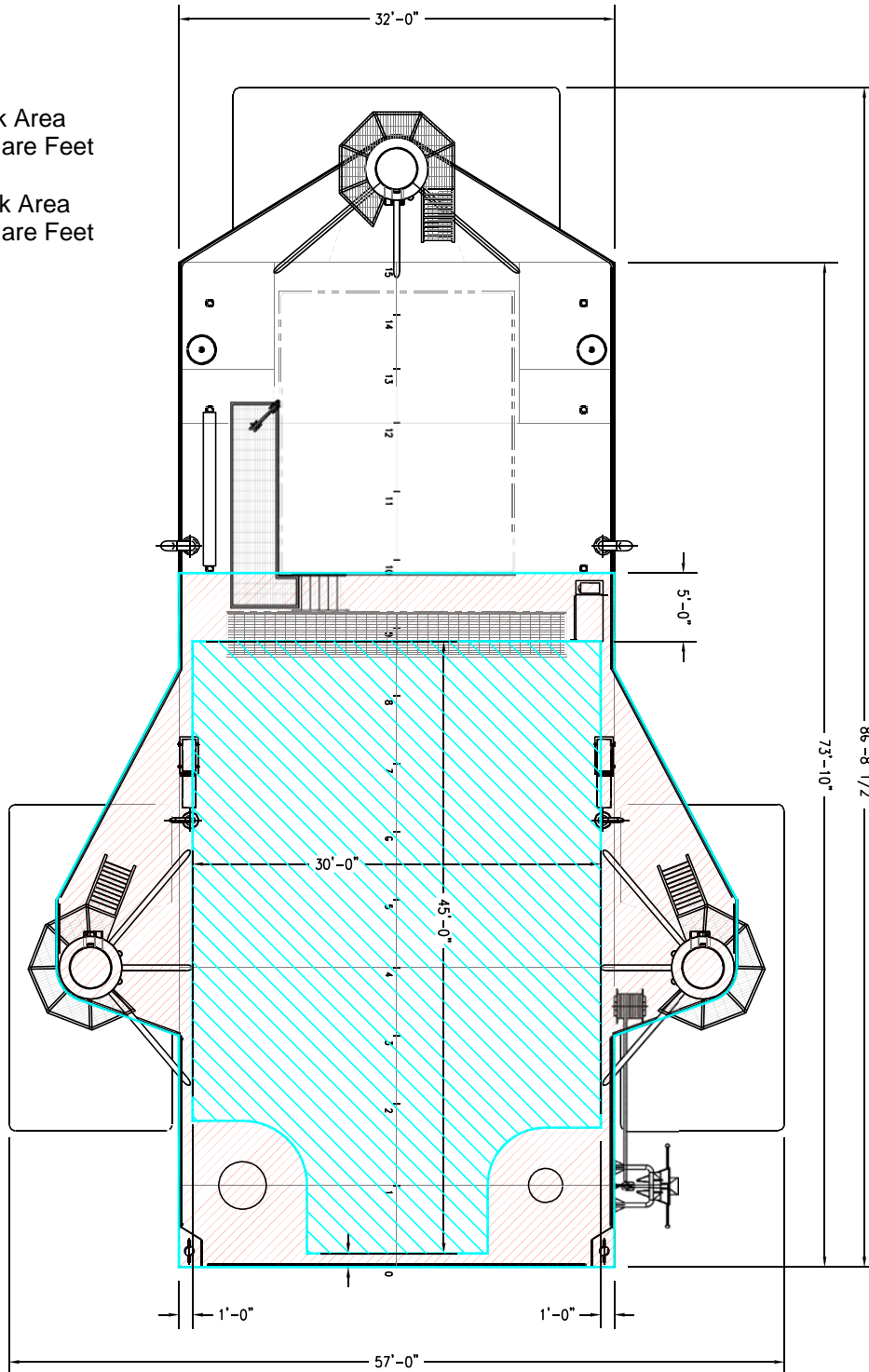




Open Deck Area

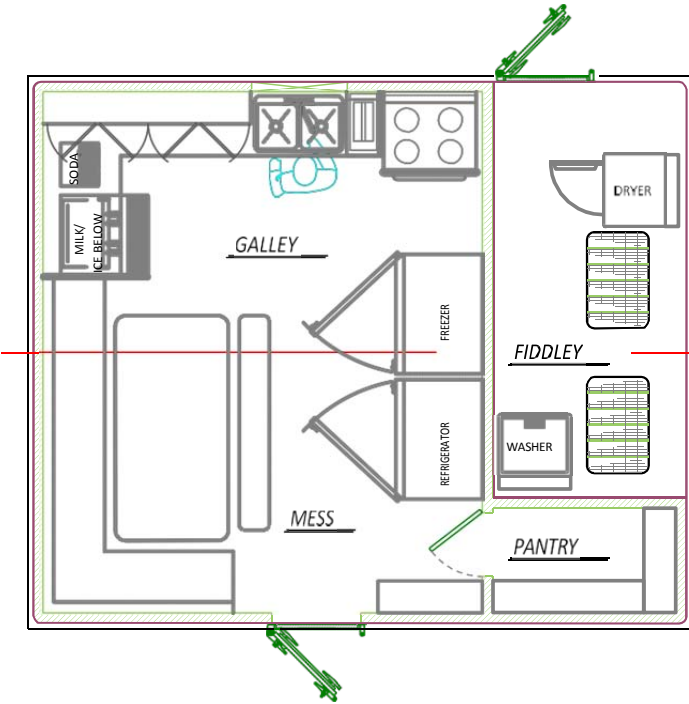
Total Deck Area
1,935 Square Feet

Clear Deck Area
1,200 Square Feet

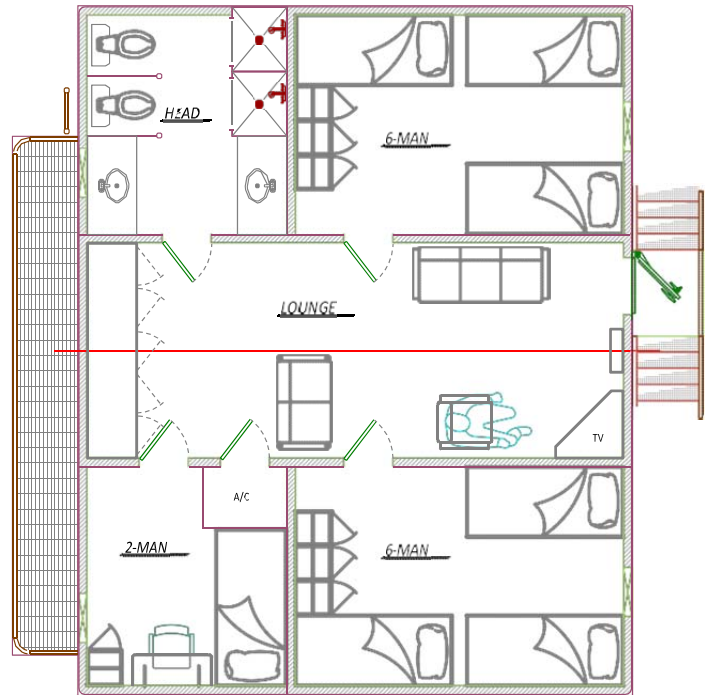




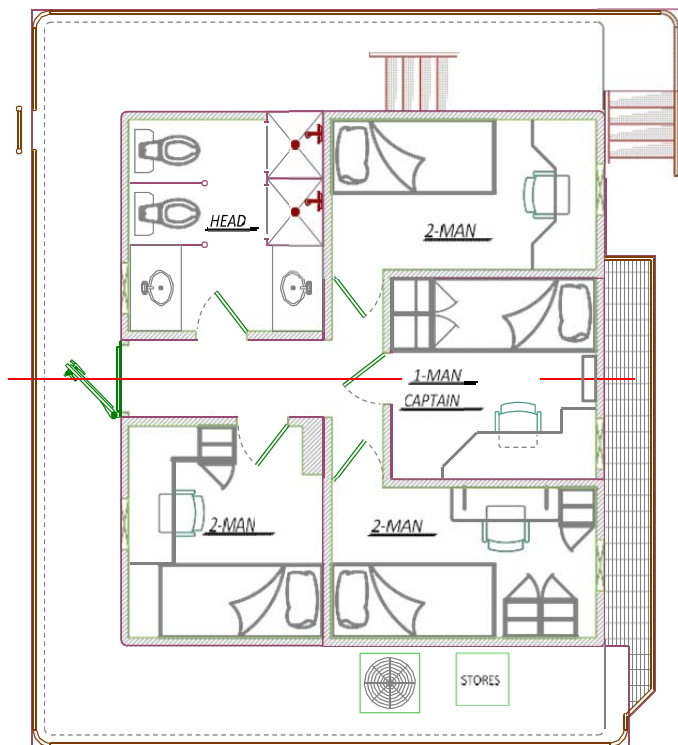
Main Deck Quarters



01 Level Quarters



02 Level Quarters



Pilothouse

