



Overview

LEG

Leg Length	125 ft
Leg Diameter (Od)	42 in
Leg Tower Height	15 ft

HULL

Length (Overall)	87.5 ft
Length (Barge Only)	75 ft
Beam (Overall)	61 ft
Beam (Barge Only)	36 ft
Hull Depth	7 ft

PAD

Length	24 ft
Width	12 ft
Depth	2 ft
Bearing Load	3,000 lbs/ft ²
Design	4-Way Slope

CRANE

	Port	Starboard
Load Rating	25 ton	10 ton
Make	SeaTrax	EBI
Model	RF1573	TC20
Boom Type	Fixed	Telescopic
Boom Length	73 ft	60 ft
Crane Inst. Type	Deck Mount	DeckMount

PROPULSION

Mains - Make	GM
Mains - Model	12V71
Horsepower	800 hp
Bow Thruster Equipped	No
Clutch Make/Reduction	Twin Disc 3:1
Consumption/Engine-Full	19.4 gph
Consumption/Engine-Half	9.7 gph

GENERATORS

Generator Engine Make	GM
Generator Engine Model	4-71
Generator Output	75 kw
Consumption/Gen	6.4 gph

DECK

Total Deck Area	2,592 ft ²
Clear Deck Area	1,436 ft ²
Additional Clear Area	N/A
Maximum Deck Load	150,000

CAPACITIES

Diesel Fuel	3,912 usg
Lube	112 usg
Hydraulic Oil	852 usg
Potable Water	4,906 usg
Watermaker Equipped	No

ELECTRONIC AIDS & COMMUNICATION

Compass	Fully Equipped
Gps/Dgps	Fully Equipped
Radar(s)	Fully Equipped
Fathometer	Fully Equipped
Loudhailer	Fully Equipped
Satellite Phone	Fully Equipped
VHF Radio	Fully Equipped
Single Sideband Radio	Fully Equipped
EPIRB	Fully Equipped
GMDSS	No

PERSONNEL ACCOMMODATIONS

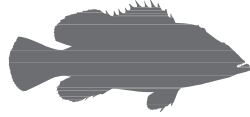
Total Accommodations	24
VIP Accommodations	2
Galley & Dining	Fully Equipped
TV Lounge	Fully Equipped
Laundry Facility	Fully Equipped
Air Condition / Heater	Std Central Units

PERFORMANCE

Estimated Speed	5 knots
Max Sep – Pad to Deck	112 ft
Max Working Water Depth	85 ft
Min Working Water Depth	7 ft

DOCUMENTATION

Class	None
Flag/ Port of Registry	USA / New Orleans, LA
USCG	Inspected
SOLAS	No
Official Number	638403
IMO	8763024
Call Sign	WDH5372
Year Built	1981
Builder	Crown Point
Registered Tonnage	179
International Tonnage	None



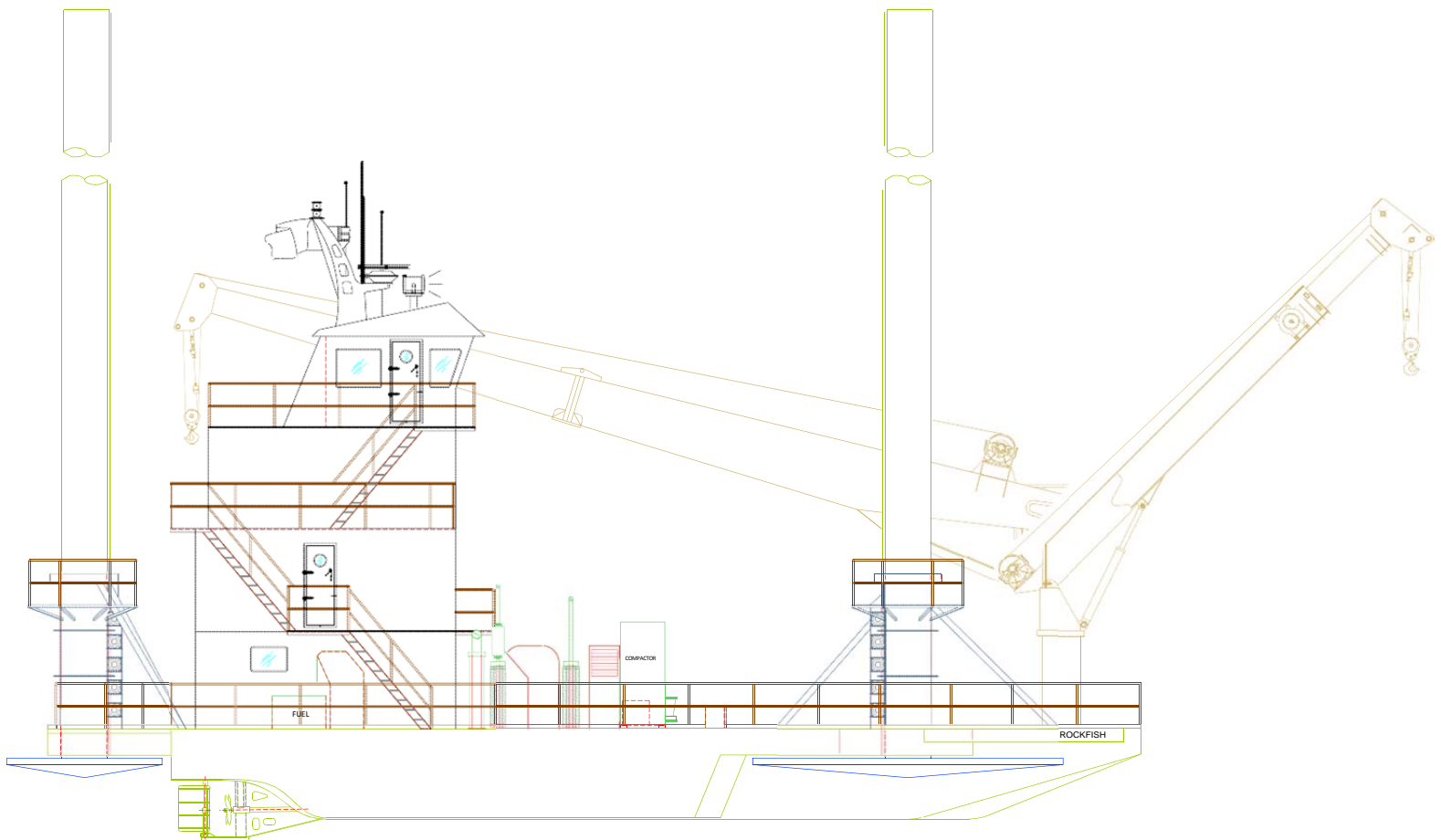
SEATRAX 25 TON CRANE		
MONARCH RF 1573		
73 FT FIXED BOOM		
MAXIMUM SAFE WORKING LOAD		
BOOM RADIUS (ft)	ONBOARD LOAD (lbs.)	OFFBOARD LOAD (lbs.)
10	50,680	41,463
15	50,680	37,567
20	50,680	33,797
25	45,749	30,499
30	38,711	27,732
35	33,033	25,365
40	28,663	23,250
45	25,140	19,954
50	22,171	18,446
55	19,546	17,188
60	17,069	15,982
65	14,466	14,466
70	10,829	10,829
72	7,000	7,000
FAST LINE RATED FOR 12,420 LBS UP TO 65 FEET		



EBI 10 TON CRANE		
TC20		
60 FT TELESCOPIC BOOM		
MAXIMUM SAFE WORKING LOAD		
30 FT BOOM RETRACTED		
BOOM RADIUS (ft)	ONBOARD LOAD (lbs.)	OFFBOARD LOAD (lbs.)
10	19,450	19,450
15	19,450	14,875
20	15,275	10,000
25	10,738	6,975
30	7,363	4,725
33	5,553	3,525
60 FT BOOM EXTENDED		
BOOM RADIUS (ft)	ONBOARD LOAD (lbs.)	OFFBOARD LOAD (lbs.)
12	12,100	8,475
15	10,438	6,775
20	8,675	5,600
25	7,438	4,775
30	6,913	4,425
35	6,125	3,900
40	4,700	2,950



Outboard Profile

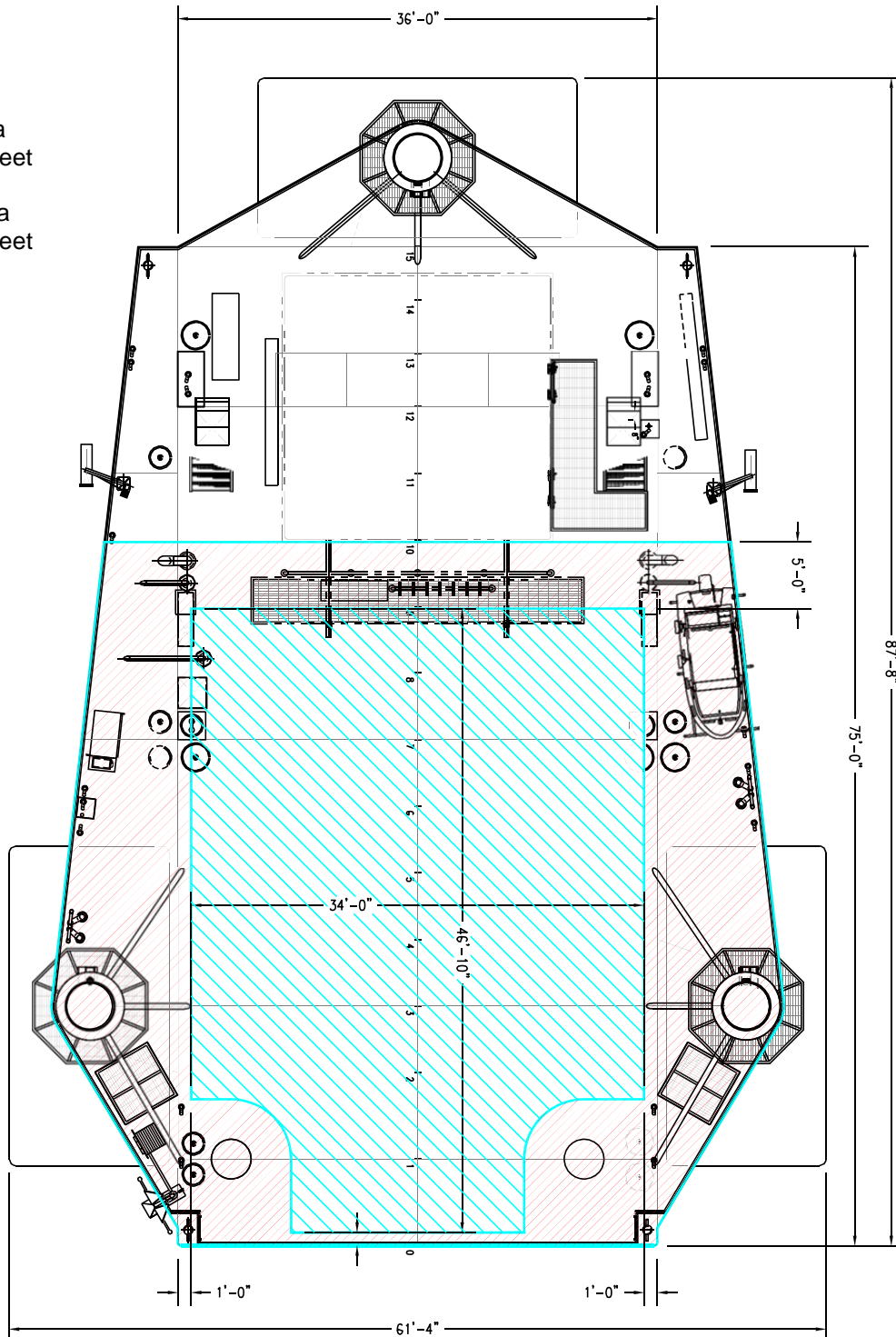




Open Deck Area

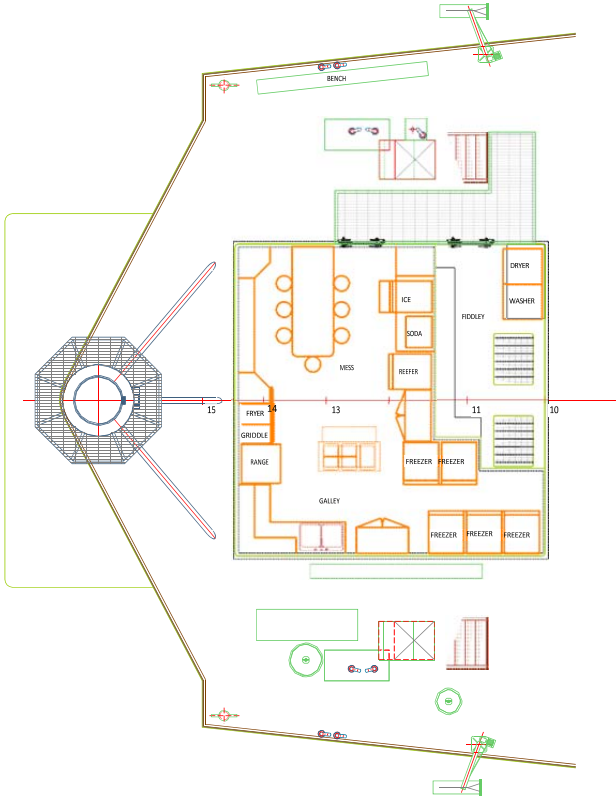
Total Deck Area
2,592 Square Feet

Clear Deck Area
1,436 Square Feet

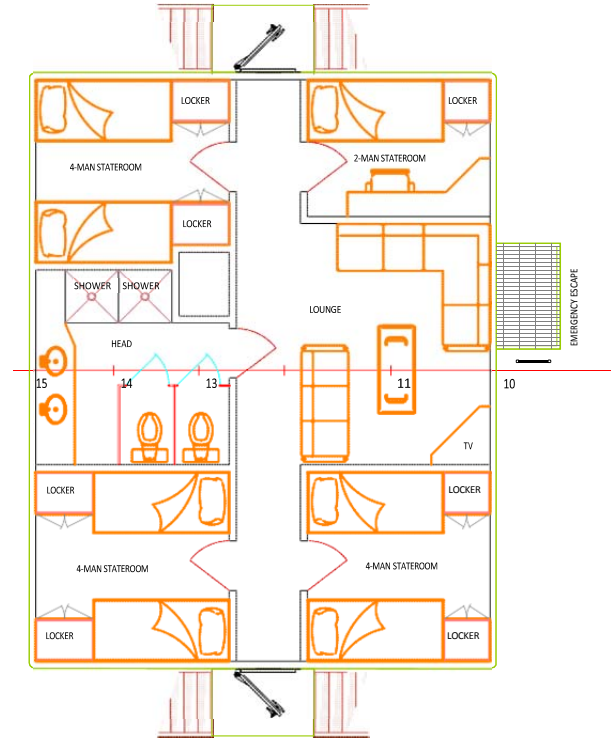




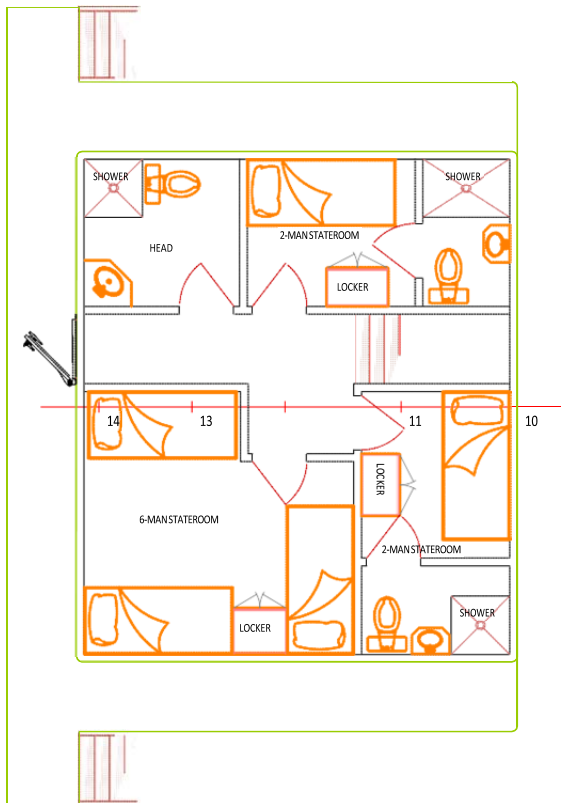
Main Deck Quarters



1 Level Quarters



2 Level Quarters



Pilothouse

