



Overview

LEG

Leg Length	150 ft
Leg Diameter (Od)	48 in
Leg Tower Height	22 ft

HULL

Length (Overall)	117 ft
Length (Barge Only)	100 ft
Beam (Overall)	68.75 ft
Beam (Barge Only)	40 ft
Hull Depth	8 ft

PAD

Length	25 ft
Width	14 ft
Depth	2 ft
Bearing Load	N/A
Design	2-Way Slope

CRANE

	Port	Starboard
Load Rating	35 ton	35 ton
Make	OECO	OECO
Model	99C035	99C035
Boom Type	Telescopic	Telescopic
Boom Length	70 ft	70 ft
Crane Inst. Type	Deck Mount	Deck Mount

PROPULSION

Mains - Make	GM
Mains - Model	16V71
Horsepower	1280 hp
Bow Thruster Equipped	No
Clutch Make/Reduction	Twin Disc 3.86:1
Consumption/Engine-Full	25.5 gph
Consumption/Engine-Half	12.75 gph

GENERATORS

Generator Engine Make	GM
Generator Engine Model	6-71
Generator Output	99 kw
Consumption/Gen	9.6 gph

DECK

Total Deck Area	3,120 ft ²
Clear Deck Area	1,648 ft ²
Additional Clear Area	N/A
Maximum Deck Load	200,000

CAPACITIES

Diesel Fuel	7,080 usg
Lube	469 usg
Hydraulic Oil	1,173 usg
Potable Water	7,080 usg
Watermaker Equipped	No

ELECTRONIC AIDS & COMMUNICATION

Compass	Fully Equipped
Gps/Dgps	Fully Equipped
Radar(s)	Fully Equipped
Fathometer	Fully Equipped
Loudhailer	Fully Equipped
Satellite Phone	Fully Equipped
VHF Radio	Fully Equipped
Single Sideband Radio	Fully Equipped
EPIRB	Fully Equipped
GMDSS	No

PERSONNEL ACCOMMODATIONS

Total Accommodations	32
VIP Accommodations	2
Galley & Dining	Fully Equipped
TV Lounge	Fully Equipped
Laundry Facility	Fully Equipped
Air Condition / Heater	Std Central Units

PERFORMANCE

Estimated Speed	5 knots
Max Sep – Pad to Deck	125 ft
Max Working Water Depth	100 ft
Min Working Water Depth	7.5 ft

DOCUMENTATION

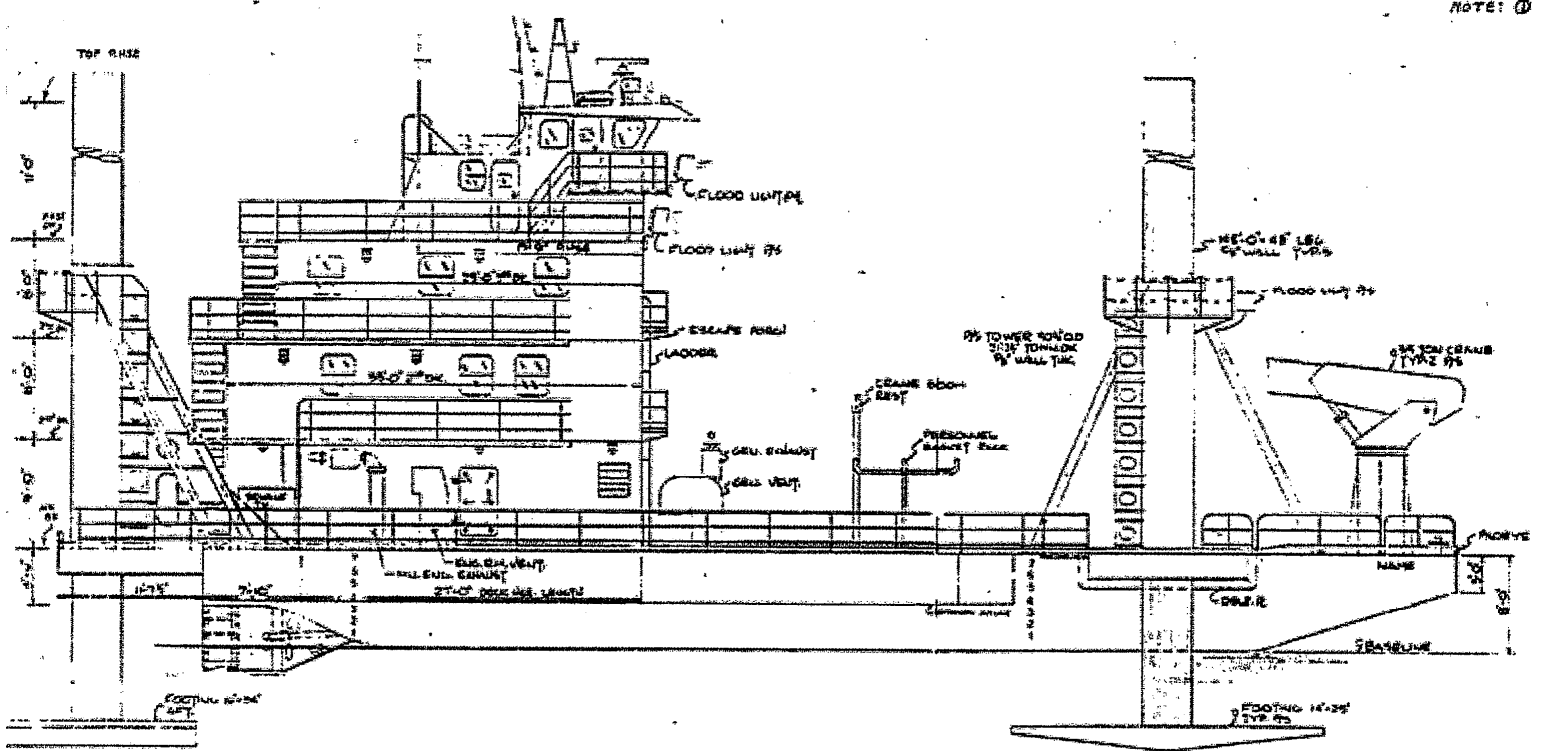
Class	None
Flag/ Port of Registry	USA / New Orleans, LA
USCG	Inspected
SOLAS	No
Official Number	659365
IMO	8765888
Call Sign	WDH4743
Year Built	1983
Builder	Sun Contractors
Registered Tonnage	186
International Tonnage	None



OECO 35 TON CRANE		
99C035		
70 FT TELESCOPIC BOOM		
MAXIMUM SAFE WORKING LOAD		
50 FT BOOM RETRACTED		
BOOM RADIUS (ft)	ONBOARD LOAD (lbs.)	OFFBOARD LOAD (lbs.)
8	76,140	50,760
10	63,780	42,520
18	36,600	24,400
26	26,800	17,867
33	21,600	14,400
39	18,300	12,200
44	15,900	10,600
47	13,900	9,267
49	12,000	8,000
50	9,800	6,533
FAST LINE RATED FOR 3,567 LBS AT ALL RADII		
70 FT BOOM EXTENDED		
BOOM RADIUS (ft)	ONBOARD LOAD (lbs.)	OFFBOARD LOAD (lbs.)
11	55,700	37,133
13	46,100	30,733
25	25,600	17,067
36	18,300	12,200
46	14,500	9,667
54	12,100	8,067
61	10,300	6,867
66	8,900	5,933
69	7,500	5,000
70	5,900	3,933
FAST LINE RATED FOR 3,567 LBS AT ALL RADII		



Outboard Profile



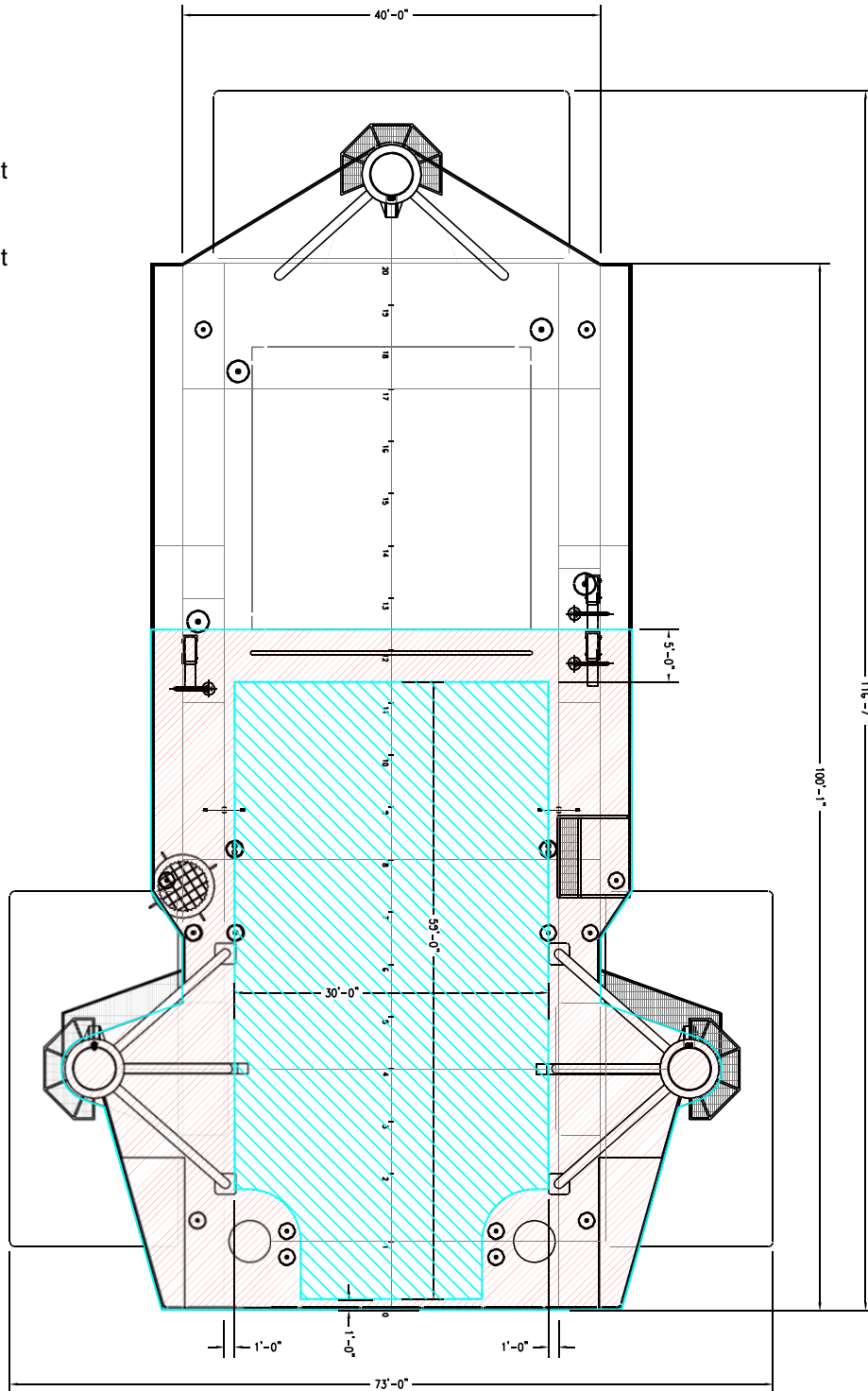
NOTE: ①



Open Deck Area

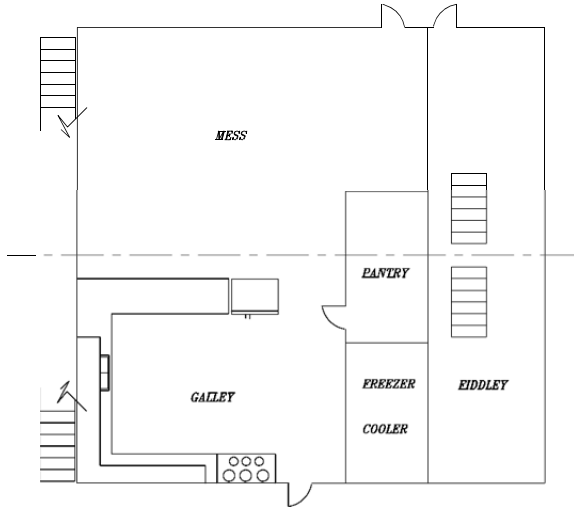
Total Deck Area
3,120 Square Feet

Clear Deck Area
1,648 Square Feet

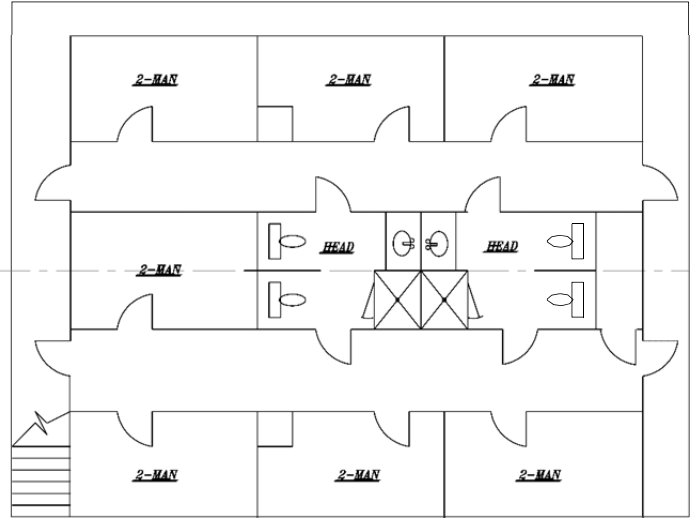




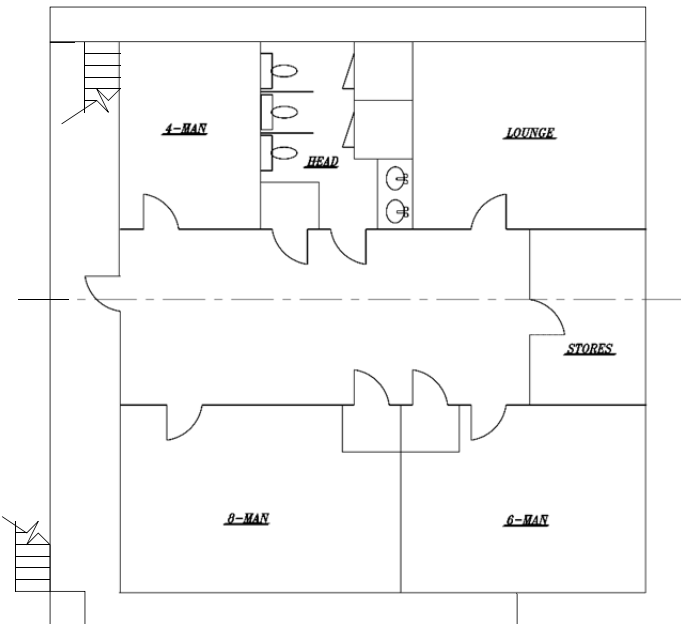
Main Deck Quarters



01 Level Quarters



02 Level Quarters



Pilothouse

